

Fixing and Purlin Spacings - Table 1

Fixing Spacings			
Profile	End Purlins	Mid Purlins - Normal Wind	Mid Purlins - High Wind
Corrugated (Roma)	Every 2nd Crest	Every 3rd Crest	Every 2nd Crest
Greca	Every 2nd Crest	Every 3rd Crest	Every 2nd Crest
Nurib (Trimdek)	Every Crest	Every Crest	Every Crest
IBR	Every Crest	Every Crest	Every Crest
Supa Clad	Every Crest	Every Crest	Every Crest
Industrial 7	Every Crest	Every Crest	Every Crest

Maximum Purlin Spacings - 0.8mm Sheet (mm)			
Profile	Roof End Span	Roof Mid Span	Wall Span
Corrugated (Roma)	800	1000	1200
Greca	900	1200	1200
Nurib (Trimdek)	900	1200	1200
IBR	900	1200	1200
Supa Clad	900	1200	1200
Industrial 7	900	1200	1200

Maximum Purlin Spacings - 1.2mm Sheet (mm)			
Profile	Roof End Span	Roof Mid Span	Wall Span
Corrugated (Roma)	800	1200	1500
Nurib (Trimdek)	900	1400	1500
IBR	900	1500	1500
Supa Clad	900	1500	1500
Industrial 7	900	1500	1500

Minimum Curve Radii (mm)		
Profile	Max. Span	Min. Radius
Corrugated (Roma)	750	6000
Greca	750	6000
Nurib (Trimdek)	750	14000

Curving is not recommended for IBR, Supaclad and Industrial 7 profiles

Storage and Handling

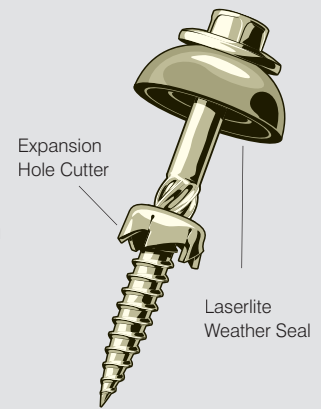
- 1) Makrolon® CS UV sheets should be stored on a flat surface in a well protected and shaded area, out of direct sunlight. Stacked sheets stored in the sun will cause heat build up and possibly distortion, even if covered. If damage occurs in this situation you will void your warranty.
- 2) Prevent moisture getting between stored sheets as this may cause whitening.
- 3) Clean sheets with warm soapy water (mild detergent) and a soft sponge. Take care not to scratch the sheet. Hose down thoroughly.

Laserlite Fixings

For use with steel purlins



Laserlite One Shot pre-drills a 12 mm (nominal) oversized hole to allow for sheet expansion with its unique blade cutter in one step saving you up to 50% installation time. No more pre-drilling required.



✓ Help your Laserlite perform better

Prevent your Laserlite polycarbonate buckling from changes in temperature by cutting an oversized hole in one action.

✓ Save 50% Installation time

Unique blade cuts an oversize hole in the Laserlite polycarbonate, and its strengthened tip drills through the steel purlin all in one action. No more pre-drilling required.

50% claim based on number of steps.

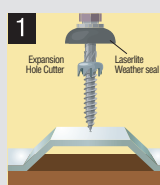
✓ Easy Installation

No more pre-drilling means installation is faster and easier. No extra expense of specialist tools. No extra effort changing tools.

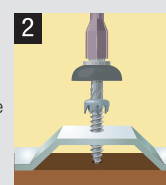
✓ Professional Finish

Automatically centres the oversized holes to allow the sheet to expand and contract in both directions equally, for the most professional finish.

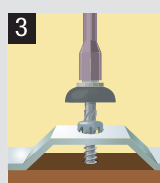
✓ Easy Installation



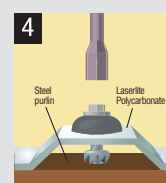
Stage 1
Firmly place the sharp point of the One Shot fixing onto the crest of the corrugation to be fixed, to eliminate "skidding" or "wandering".



Stage 2
Commence drilling at 2000rpm to pierce the sheet. Screw engages in steel purlin.



Stage 3
Cutter engages polycarbonate sheet, cuts the expansion hole and centres the screw.



Stage 4
Wait until the rubber weather seal engages and compresses against the roof sheet and under the fixing head, to stop.

Specifications

- 55mm in length
- Suitable for use with Roma, Greca and Trimdek profiles
- 12 gauge, 14 threads per inch
- Suitable for use with steel battens gauges 0.75mm to 4.5mm*
- Suitable for use with 5/16" Drive
- Hex Head
- Mechanically plated to comply with AS 3566 Class 3

*One Shot fixings are also available for use with timber purlins

Standard fixings are also available to suit Roma/Greca (45mm) and Trimdek (55mm) profiles.